

BAGI KOPI BASEMENT

Project Year : 2022
Location : Blitar, Indonesia
Project Type : Built Project
Project Team : Aryazopa Tjong
Fikri Izza
Nurbaiti Khasanah
Satrio Seno
Tedy Shahidan

Short Desc. : bagi kopi basement is aimed to be a coffee shop that safe for everybody and became a second home for them. this project was interesting because the place itself, which is basement, we never expect before.

after rebranding their product, we tried something new for bagi kopi with monochromatic color and materials explorations such as barrisol lighting and partition lights. we also do less of demolishing the building because the perviously building is still in a good condition.

Tags : *Commercial, Coffee, Preservation, Basement*

□ probono project □ research project
□ commission project □ workshop
■ built project □ exhibition



DESIGN WORKFLOW

The early design process of this house is divided several stages. we began the process by understanding the site regulation and the context surrounding so that we know our formal canvas.

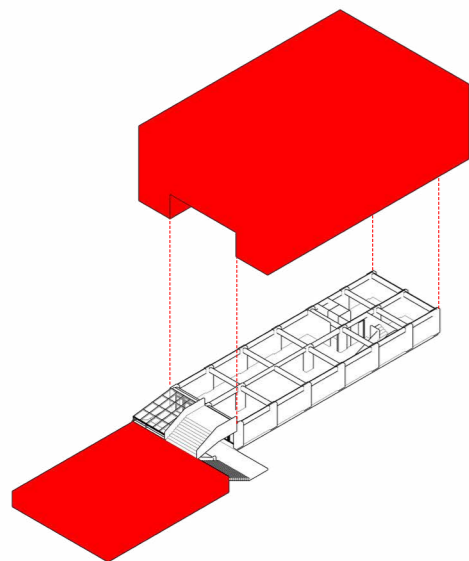
since the circulation of the user of this building is important, we began with zoning exploration that leads to layout explorations.

site profile

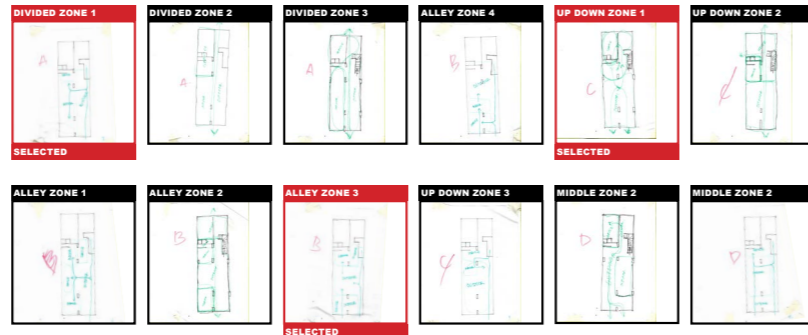
site area :
981 sqm



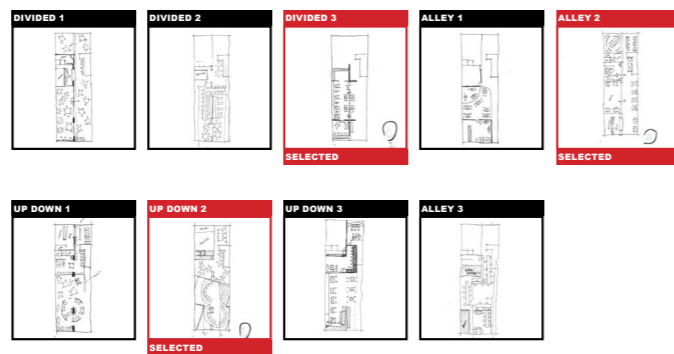
existing axonometric



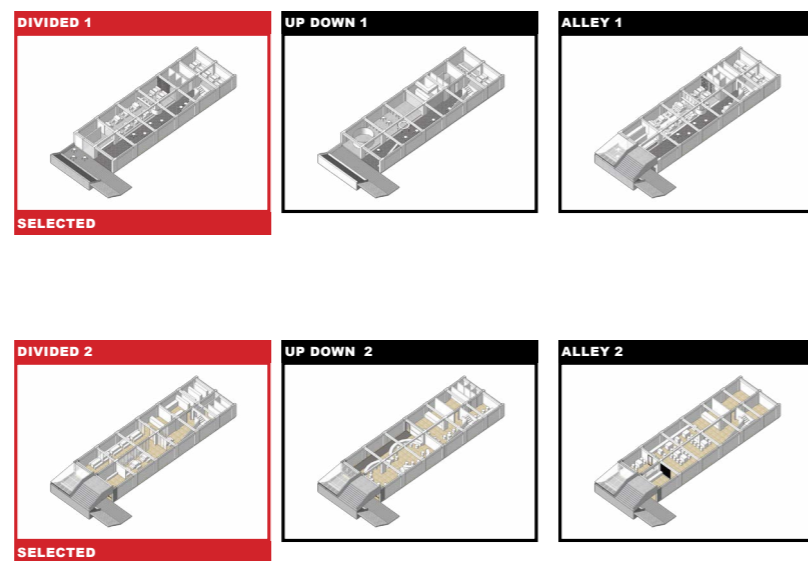
zoning exploration



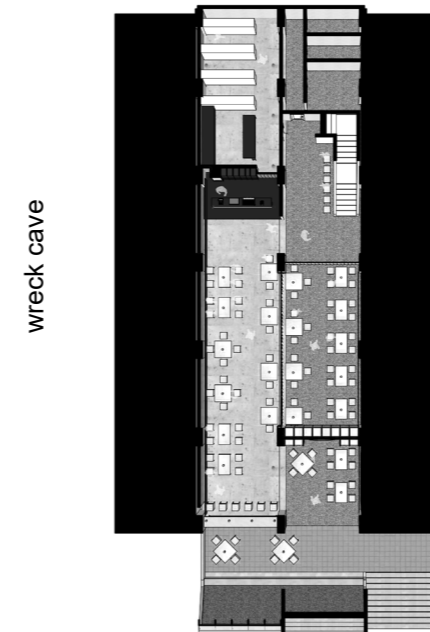
blocking exploration



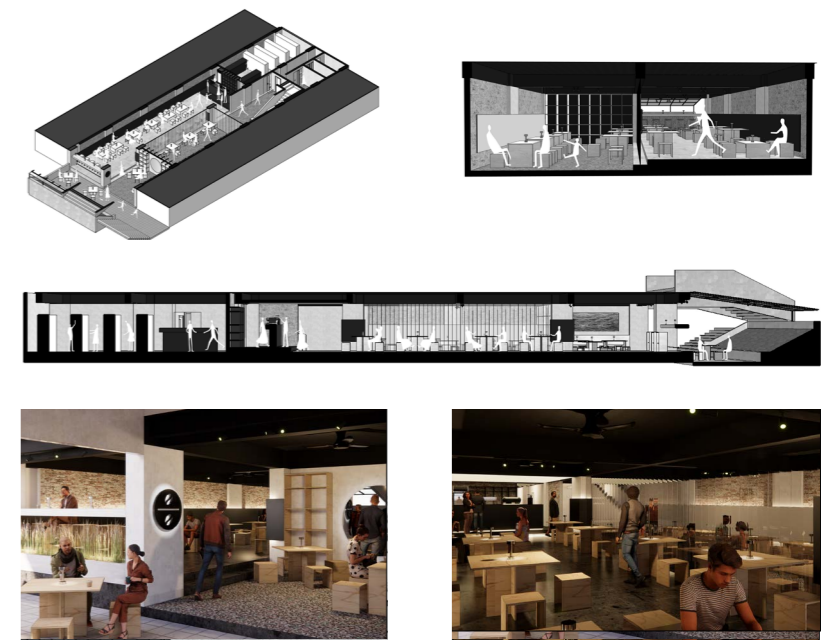
layout exploration



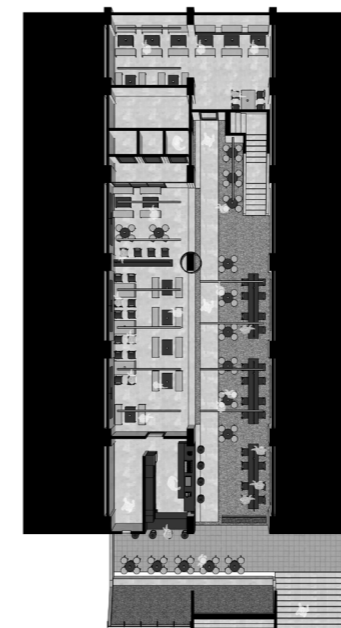
proposed floorplan



proposed model

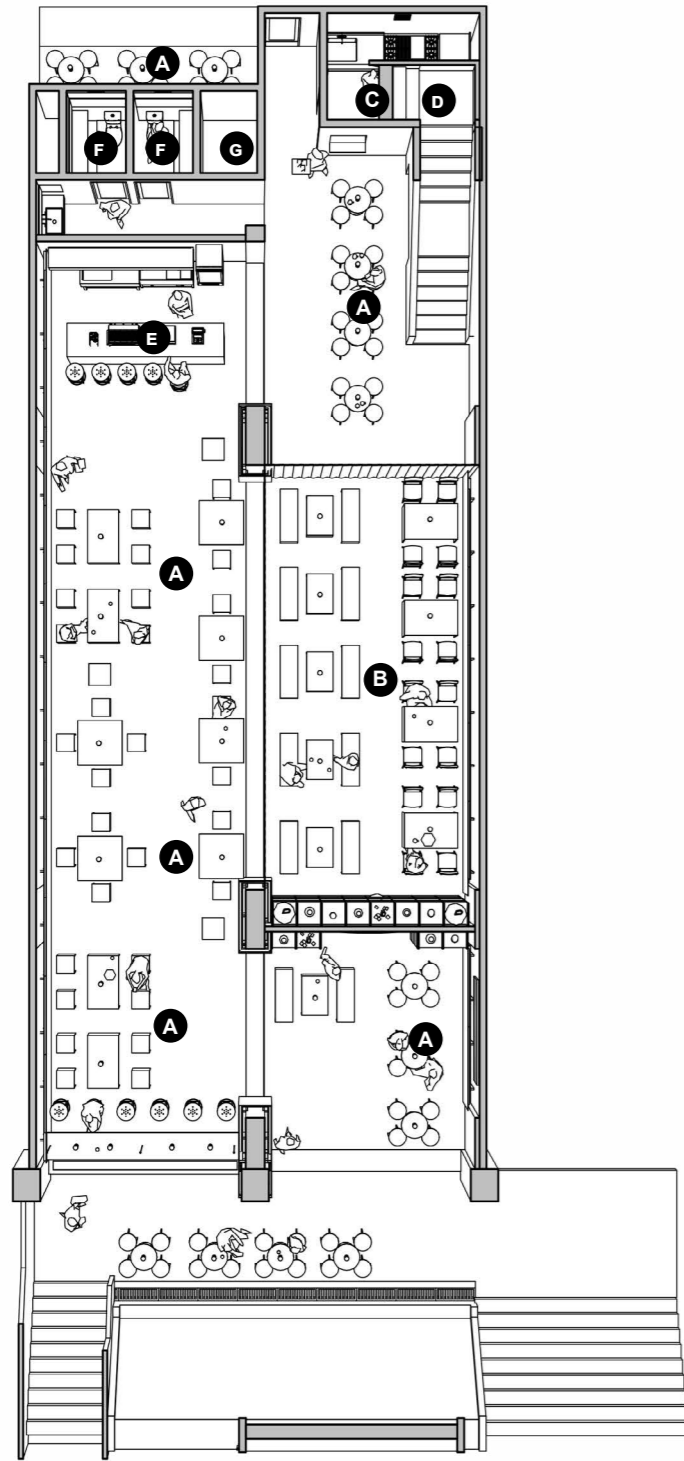


metro chamber



**DESIGN
OVERVIEW**

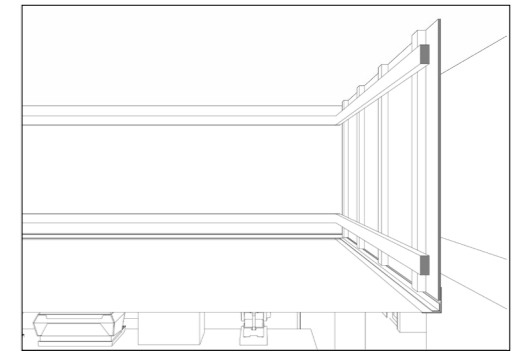
floorplan



legend :

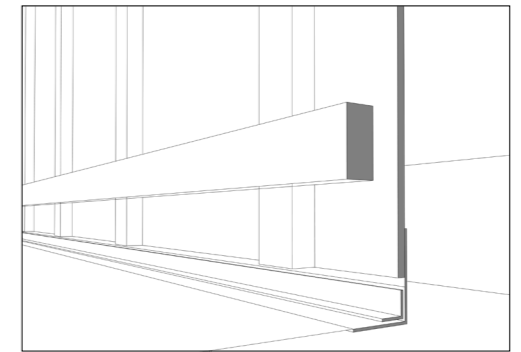
- A** outdoor seating
- B** indoor seating
- C** kitchen
- D** storage
- E** bar
- F** toilet
- G** musholla

detail



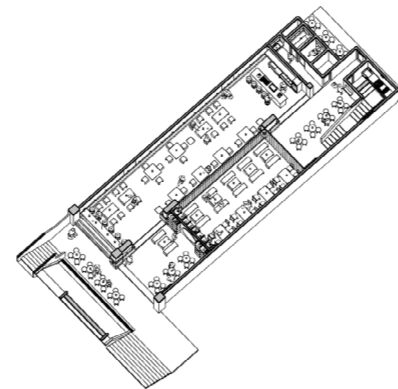
barrisol lighting

barrisol lighting is one of our feature elements in this project. it made by hollow construction covered with barrisol with lighting inside. it gives more warm and cozy mood to this building.

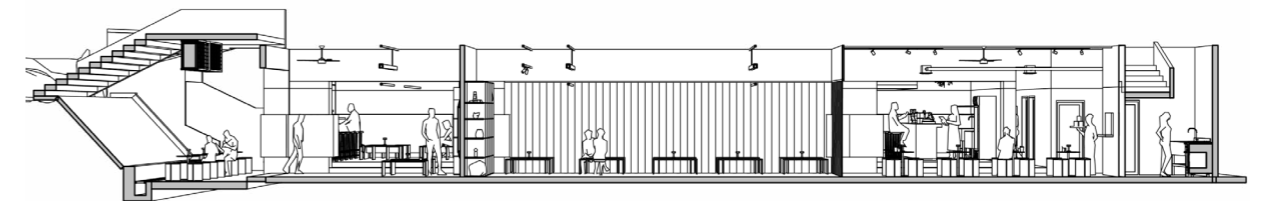


axonometric

ground floor
it consists of public and semi private programs to accomodate bagi kopi to serving their customer.



section



ATTACHMENT



front view of bagi kopi basement



a man sit and do nothing in the the outdoor area while their coffee is getting cold



a woman selfie infront of the mirror in the foyer



entrance access



wide view from bar



indoor seating area



foyer through human eye view in the corner of the building



wide view from terrace



wide view from dining area



bagi kopi basement situation on halloween party



red light spotted towards the ceiling



foyer situation



barista brews a cup of coffee at bar



bicycle parking