

UTUTU FRUITBAR

Project Year : 2020
Location : Surabaya, Indonesia
Project Type : Built Project
Project Team : Fikri Izza
Zulfikar Ibrahim
Muhammad Hasby
Hilman Prakoso

Short Desc. : Located in a dense commercial area of Surabaya, this project aimed to become an urban oasis and a completer for the city's neighborhood. this project commissioned at the first month of covid-19 pandemic, so instead of proposing a commercial typology in a form of solid building, we try to make it more open by proposing a micro-park typology with a small fruitbar tenant.

Tags : *Commercial, Pandemic, Covid-19, Micro-Park, Fruit, Bicycle*

□ probono project □ research project
□ commission project □ workshop
■ built project □ exhibition



GENERAL CONTEXT

Located in a narrow [4 x 25] sqm site in a dense commercial area of Surabaya, this site is so narrow that we thought creating the same massive building as our neighbors would be an unnecessary effort for this project, because the budget probably will be inflated higher, and too many indoor area might not suit during this pandemic era.

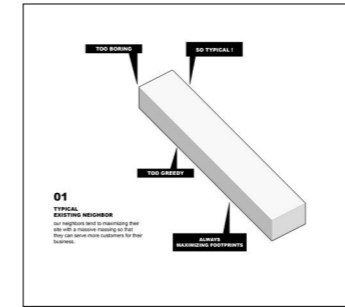
Thus, we're proposing our design by shifting our focus from creating more massing to creating more open space so that it can let our site become the only oasis of calm in the busy noisy area of our neighborhood.



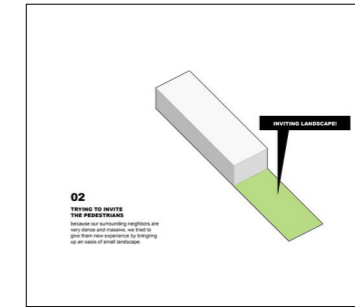
our design footprint compared to our neighbor



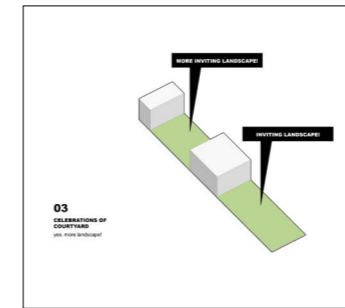
our design on a bigger context



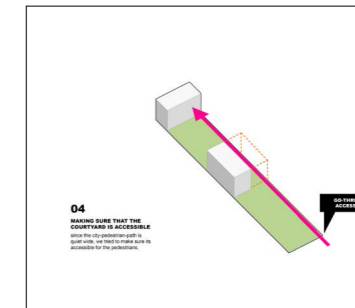
01 regular boring box (if we only extrude all our site like our neighbors)



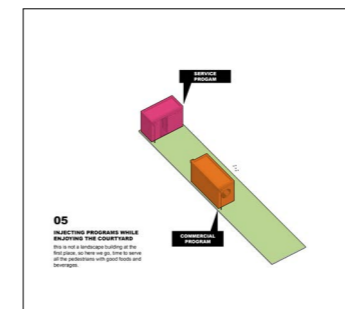
02 setting up setbacks to let our set welcomes anyone who come or passing by



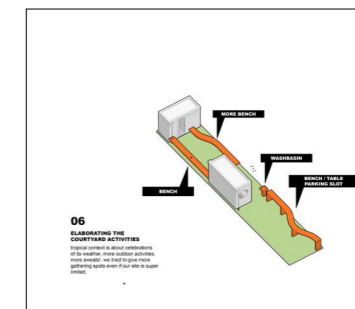
03 reducing the massing to its minimum size and inserting inner courtyard



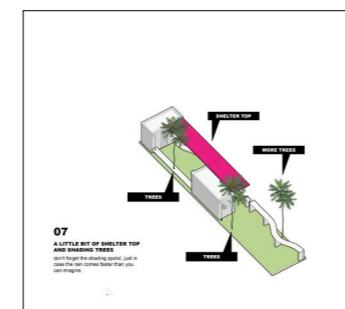
04 inserting direct efficient access



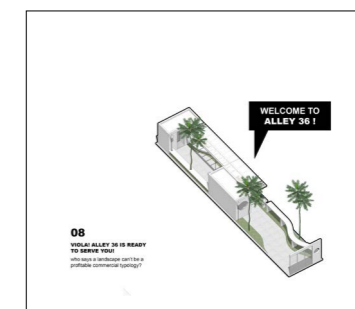
05 defining program. the orange one for fruit tenant, the pink one for service and support



06 inserting additional element. a bench and a bench that also functioned as bicycle park



07 trees and canopy for shading



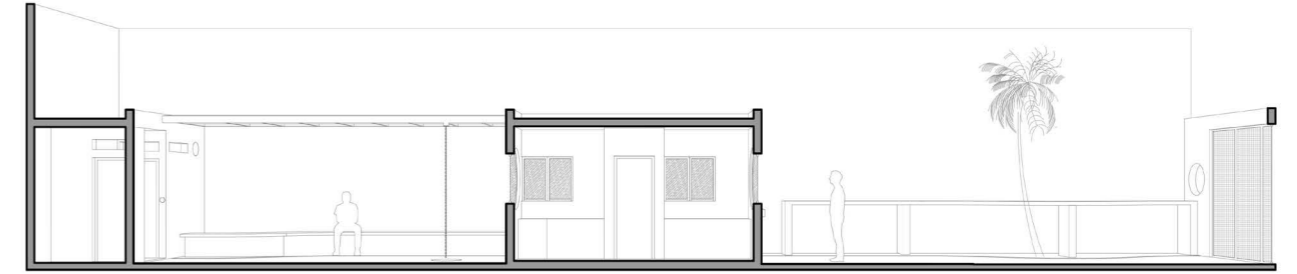
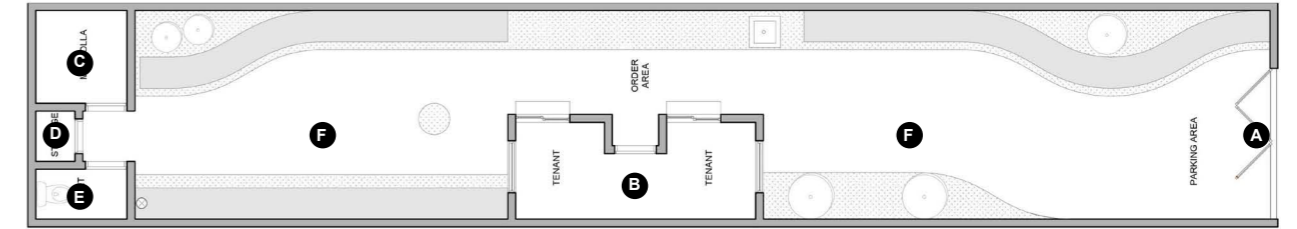
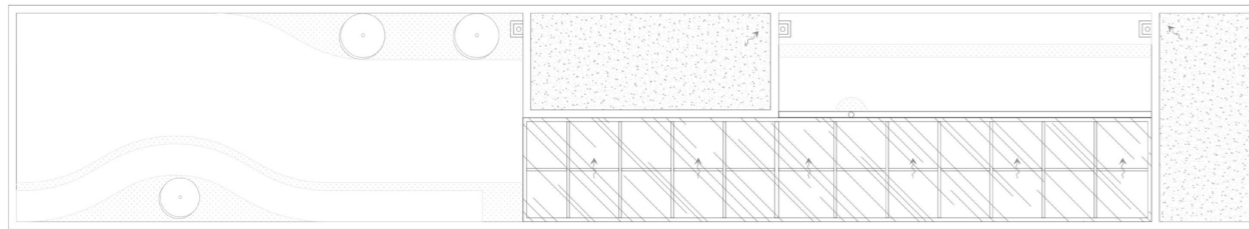
08 welcome to ututu fruitbar

DESIGN OVERVIEW

The heart of this project relied on the whole open-space where most of the activities take place. We keep the open space uninterrupted by particular programs so that it can be dedicated as an accessible inviting entrance while all the commercial and support activities distributed inside 2 small massing.

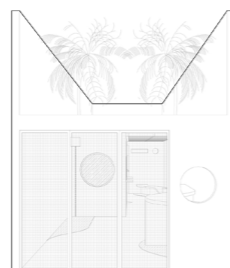
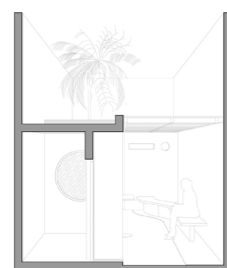
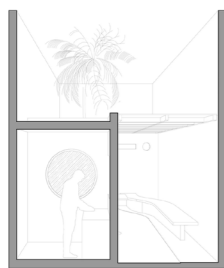
legend :

- A** entrance
- B** tenant
- C** praying room
- D** storage
- E** toilet
- F** landscape



SECTION 04

SECTION 03

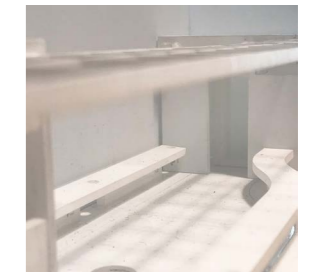
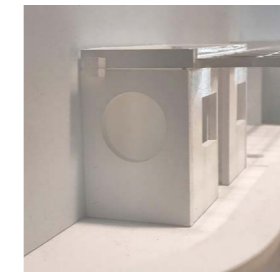
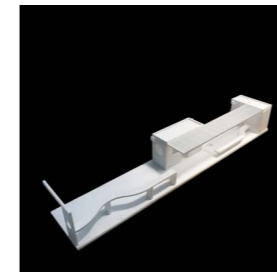


SECTION 02

SECTION 01

ELEVATION A

elevation and
sections on multiple
sides and situations



ATTACHMENT



ututu fruitbar between massive neighbor building



modest and simple facade



go through access



welcoming the pedestrian path



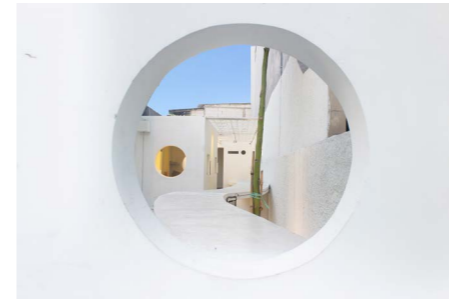
frontyard situation



order window



inner courtyard situation



see through experience



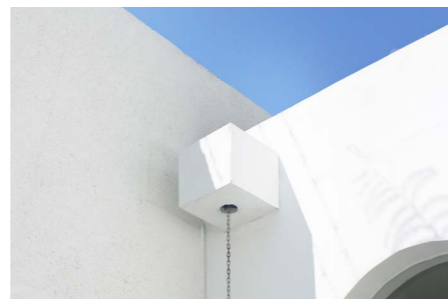
frontal window of the tenant



mini bar



ututu fruitbar staff starting the shop in the morning



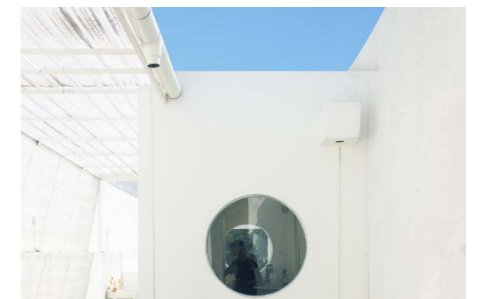
raining gutter detail



fruits



multiunctional bench and bicycle parking



back window of the tenant