

PPMU FEMALE STUDENT PUBLIC TOILET

Project Year : 2022
Location : Blitar, Indonesia
Project Type : Built Project
Project Team : Fikri Izza
Satrio Seno
Tedy Shahidan

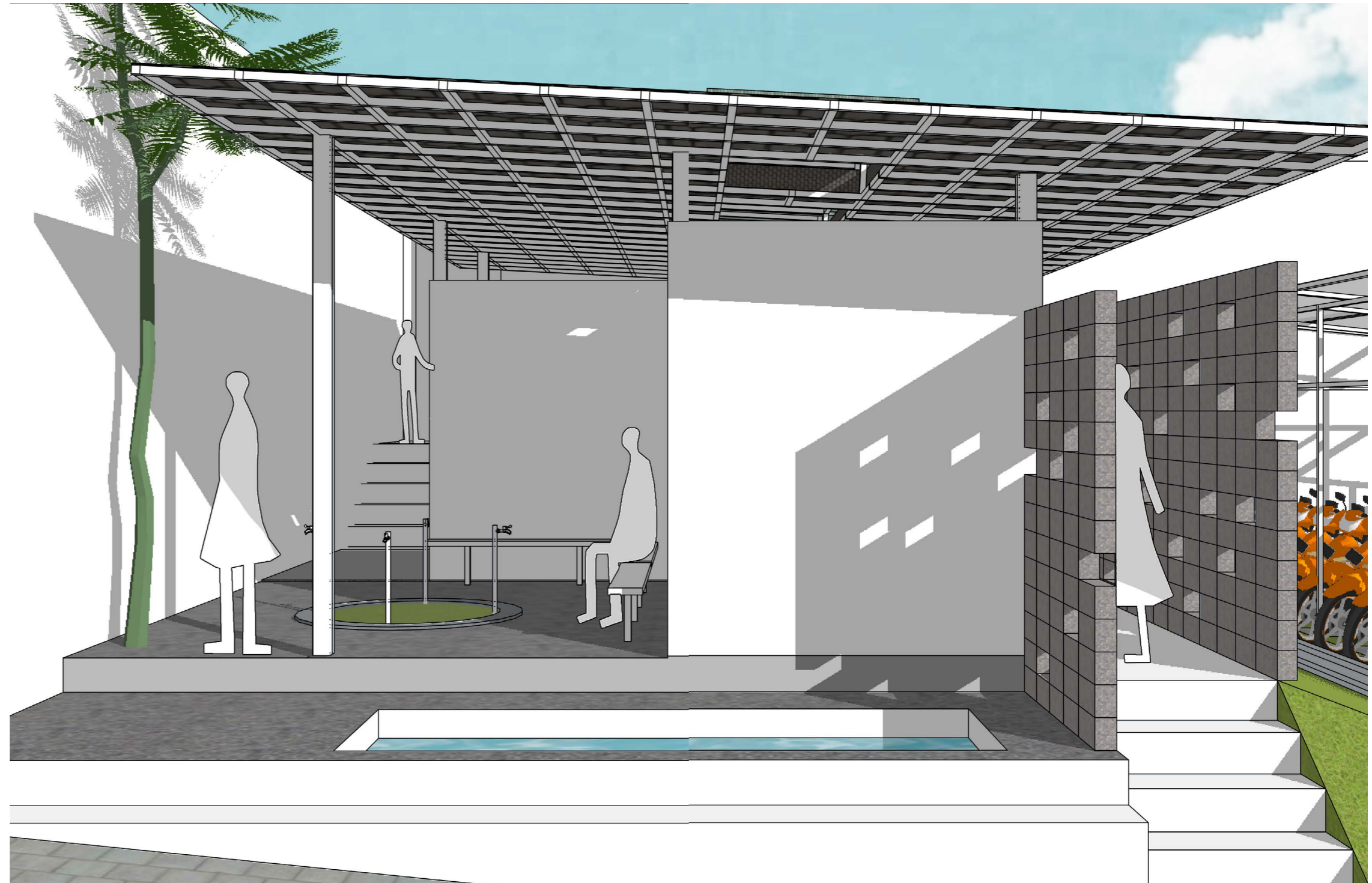
Short Desc. : "Ponten" or fountain in this project means wudhu area and toilet.

Located in Pondok Pesantren Maftahul Uloom Blitar, this project aimed to convert a student dorm that directly connect with mosque to be toilet for santriwati.

During design process, we tried to less in demolishing but also tried to make this building become a safety space for santriwati to wudhu. Besides, air circulation and nature lighting also getting more attention.

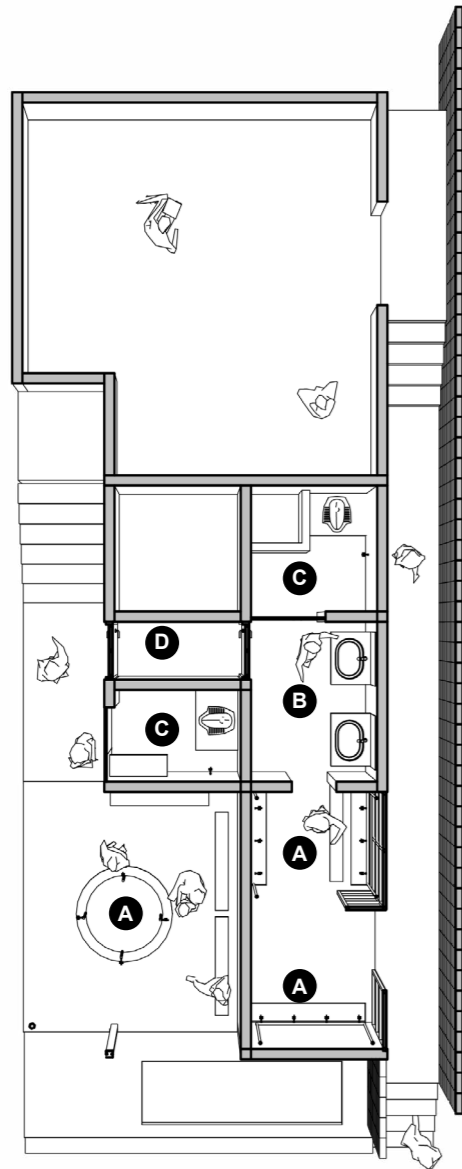
The wall between ponten with grape shelter using batako to give more safety. The safari roof support to make a good air circulation.

Tags : *Education, Country-side, Toilet, Blitar, Bording School, Preservation*



**DESIGN
OVERVIEW**

floorplan

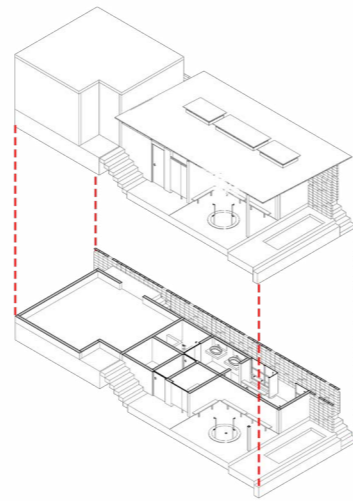


legend :

- A** wudhu area
- B** washtafel
- C** toilet
- D** storage

isometric

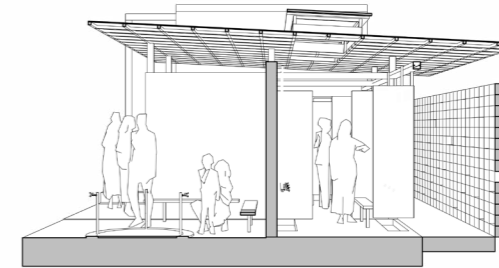
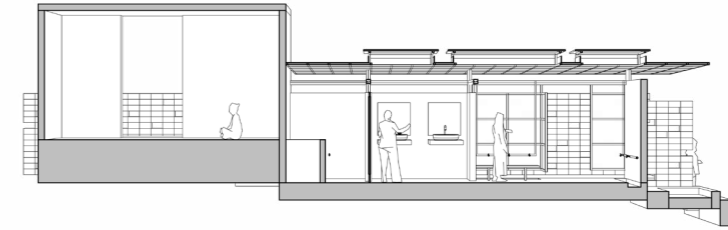
in this building, there is a dedicated space that only accessed by santriwan or santriwati and seperated by a partition



section

wind chimney as a wind catcher as well as natural heat exhaust.

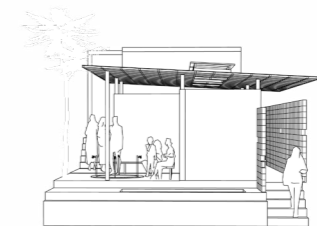
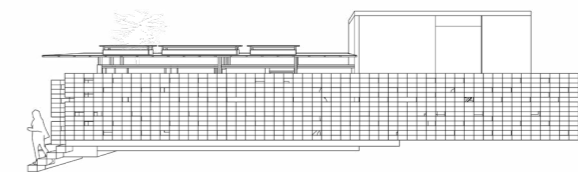
the design consist of 2 main space, the left one become a santriwan toilet while the right one become a santriwati toilet. the diarams shows us the zoning between these two space with the wall appearance.



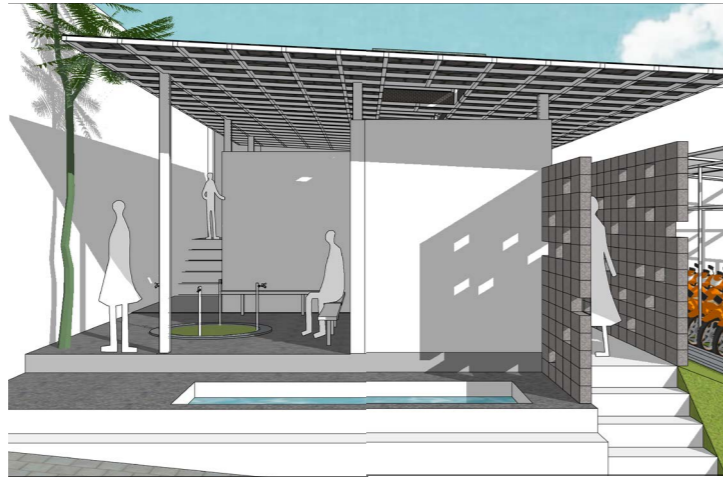
elevation

the wall between ponten with grape shelter using batako to give more safety but also support the air to get inside the building.

the wall also become a separation for santriwan and santriwati's toilet. each of toilet has their own access to go to mosque.



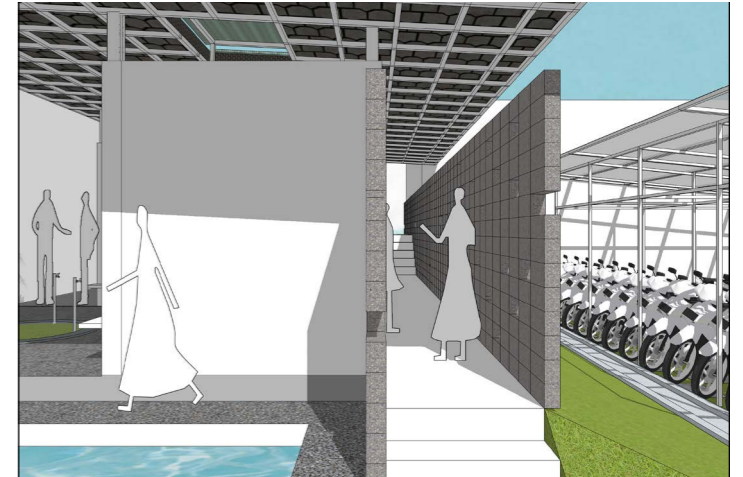
ATTACHMENT



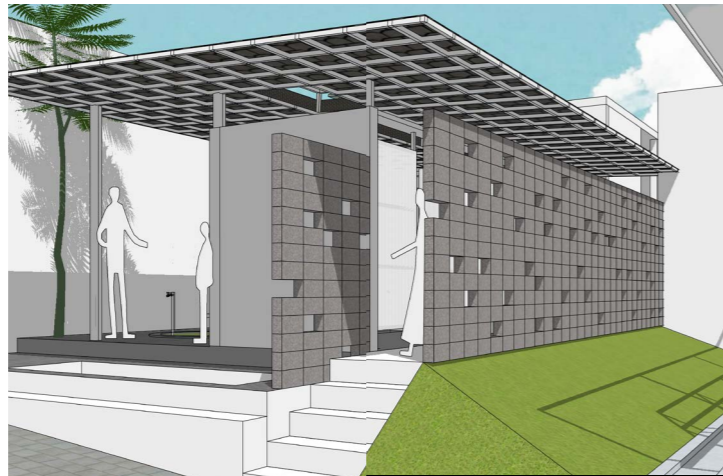
the situation of the building shows the separation between santrivan and santriwati's toilet.



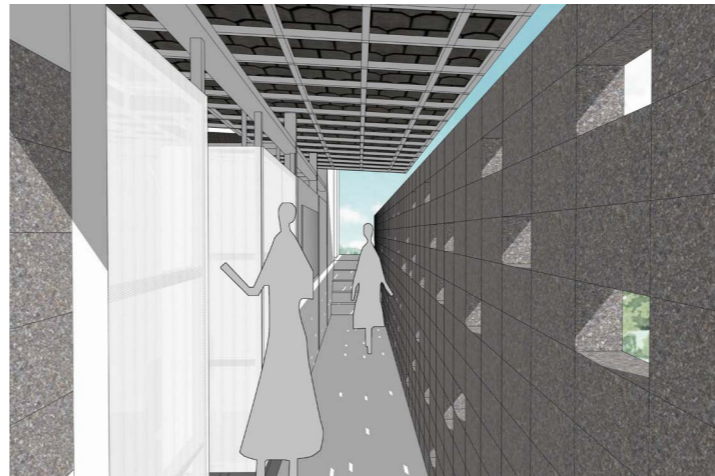
front view of wudhu area that also has a directly access to mosque



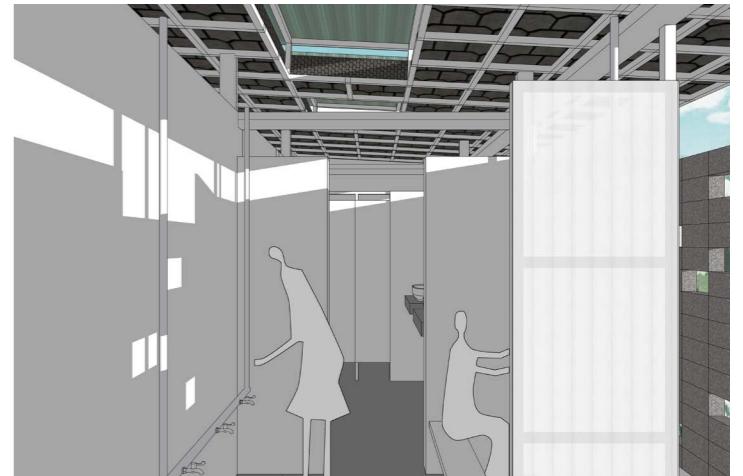
the relation between context and the building on main entrance



how the building placed beside the mosque



the direct access for santriwati to heading to the mosque



inside the wudhu area for santriwati, there is a secluded area to make this space more safe