

# BIENNALE JATIM X

**Project Year** : 2023  
**Location** : Surabaya, Indonesia  
**Project Type** : Exhibition  
**Project Team** : Advan Beryl  
Fikri Izza  
Satrio Seno  
Princess Griffith

**Short Desc.** : Biennale Jatim is a grand arts and exhibition event held every two years in East Java organized by the Biennale Jawa Timur Foundation. Since first held in Surabaya on 2005, the Biennale serves as a benchmark for artistic achievements for artists in East Java. For its tenth event, Biennale Jatim hosts the theme of Cultural Synthesis, creating 3 different curatorial readings of coastal, urban, and mountain.

**Tags** : *Biennale, Exhibition, Art, Installation, Temporary, Event*



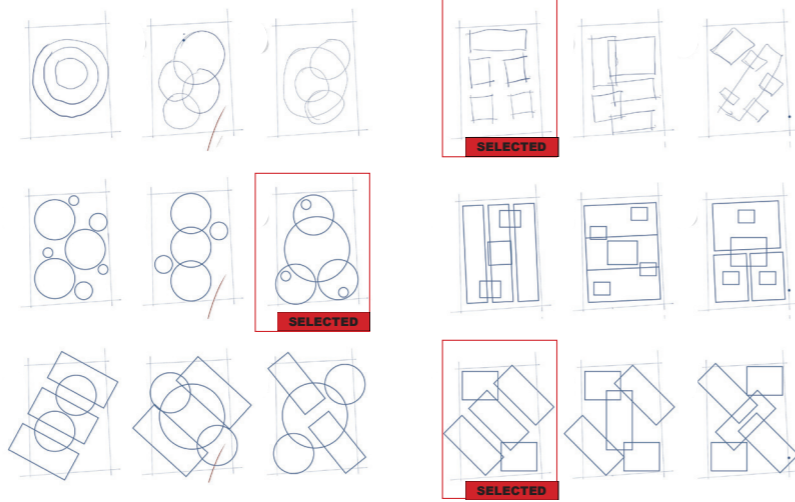


## DESIGN WORKFLOW

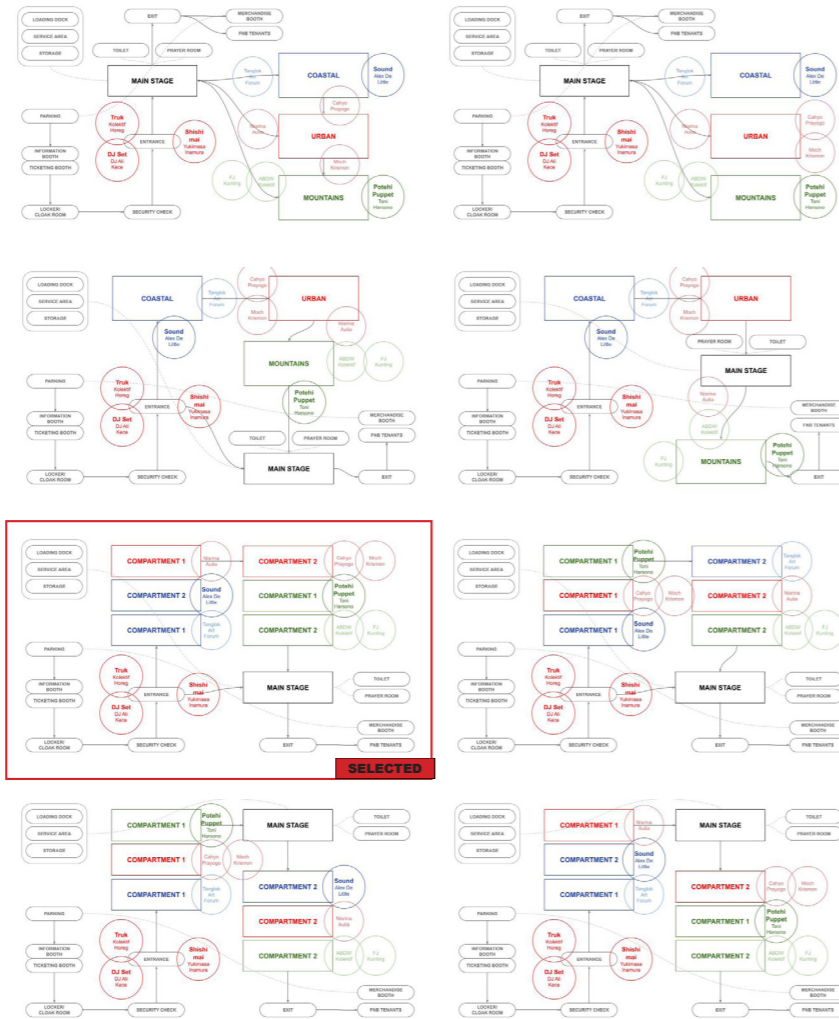
The design process started with an exploration of zoning for each curatorial categories. Keywords such as circular, diagonal, and linear zoning arises. On the next stage, circulation exploration iterates possibility of circulation in regards to 3 curatorial categories. The idea of compartment emerge as a result of the stage. A compartment that contains various artwork from each curatorial.

Through combining chosen zoning and circulation exploration in the context of the site, 6 options emerges. From here, each of the options are injected by examples of artwork by participating artist from each curatorial. These work are categorized on each compartment through their characteristic, tangible, and intangible aspects of its work.

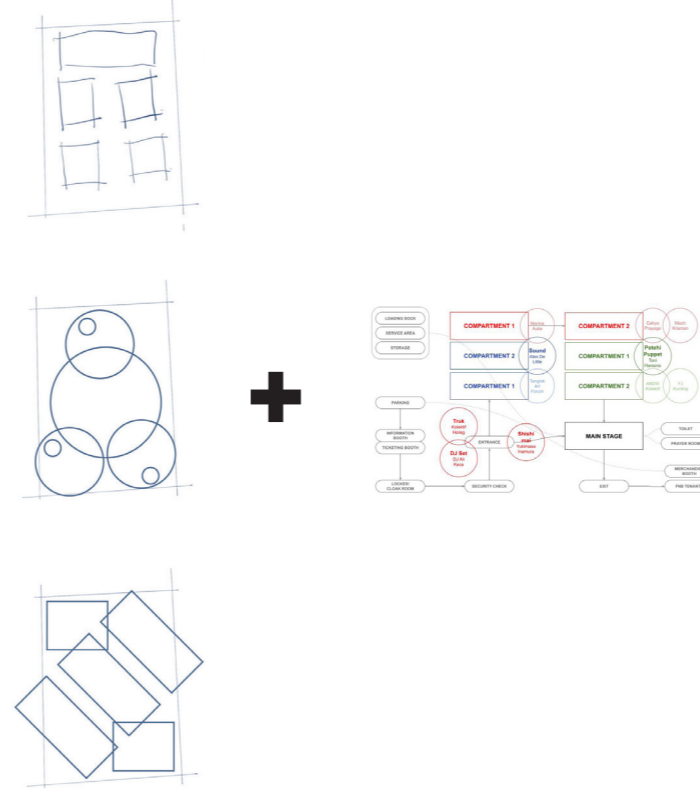
zoning exploration



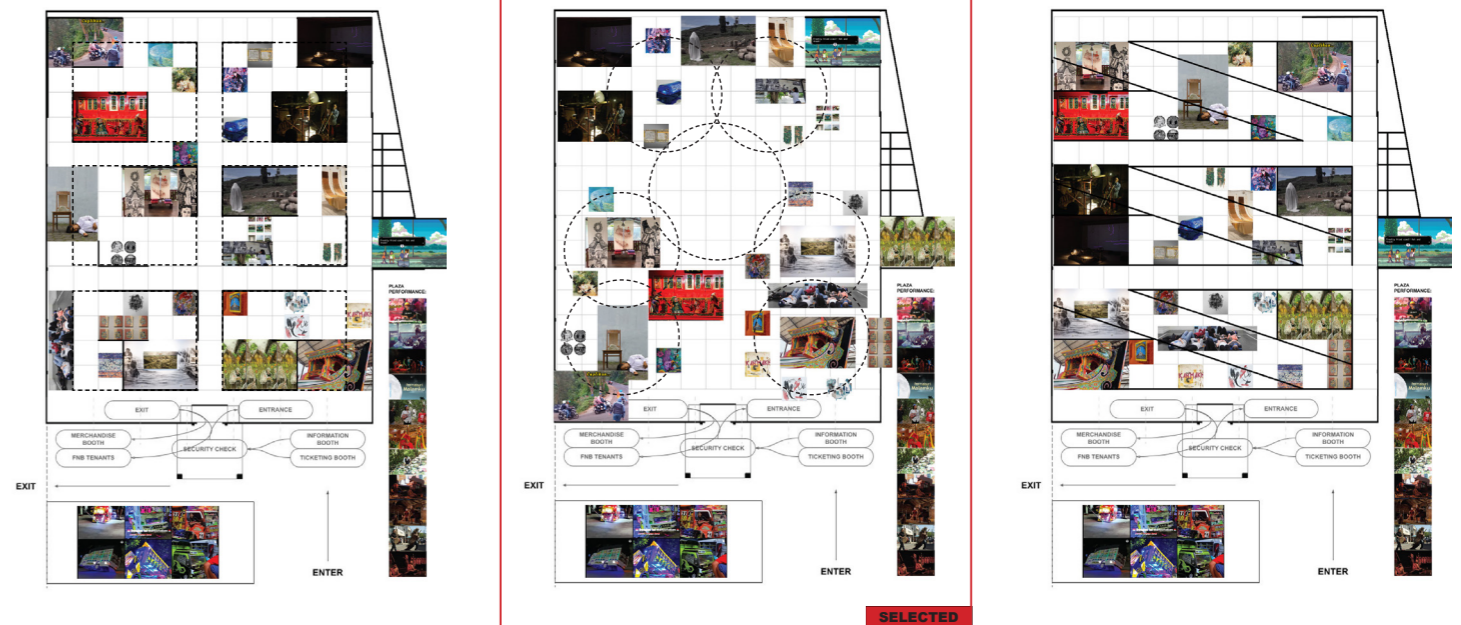
circulation exploration



sequence exploration



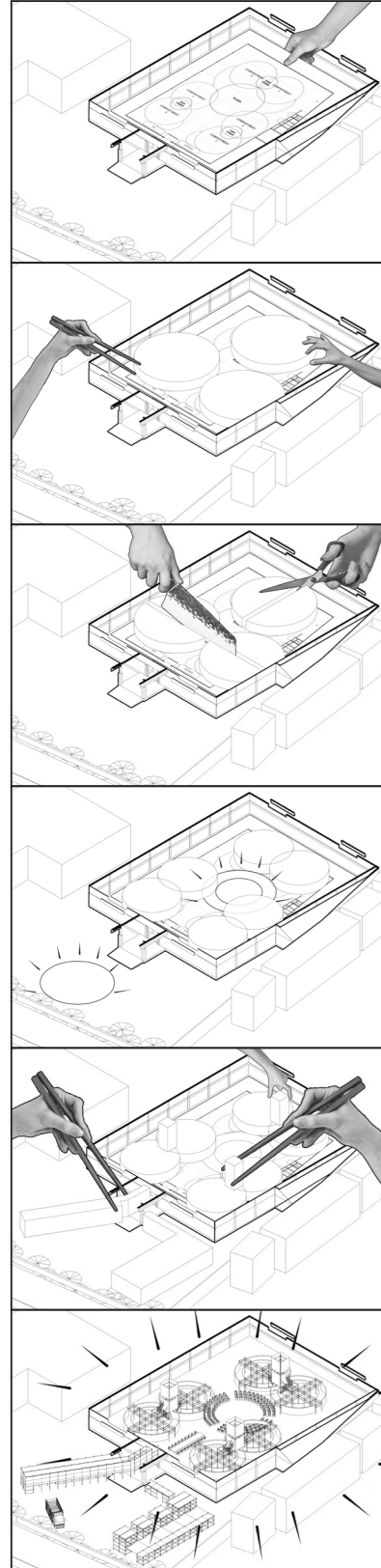
artwork insertion



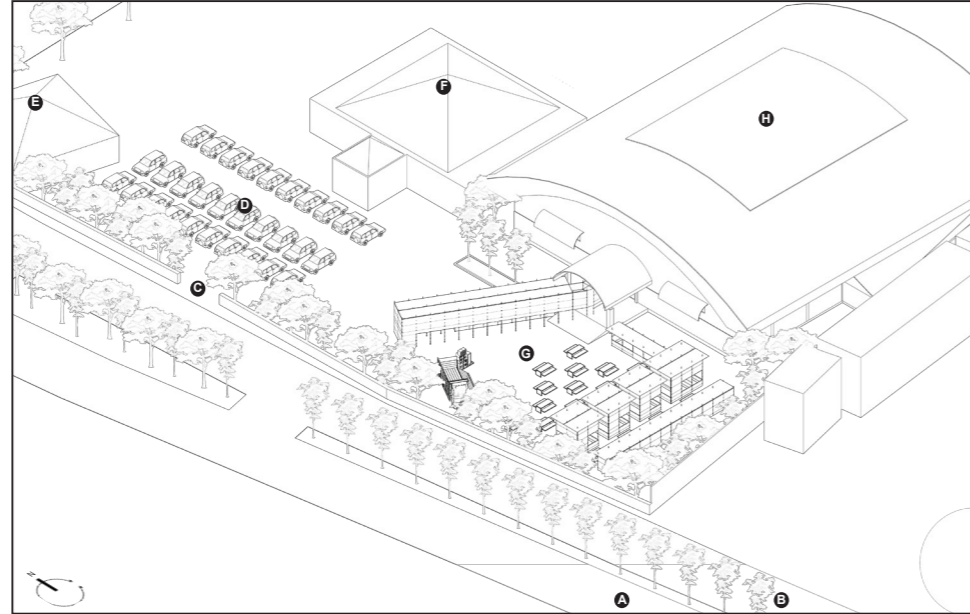


**DESIGN  
OVERVIEW**

development stage

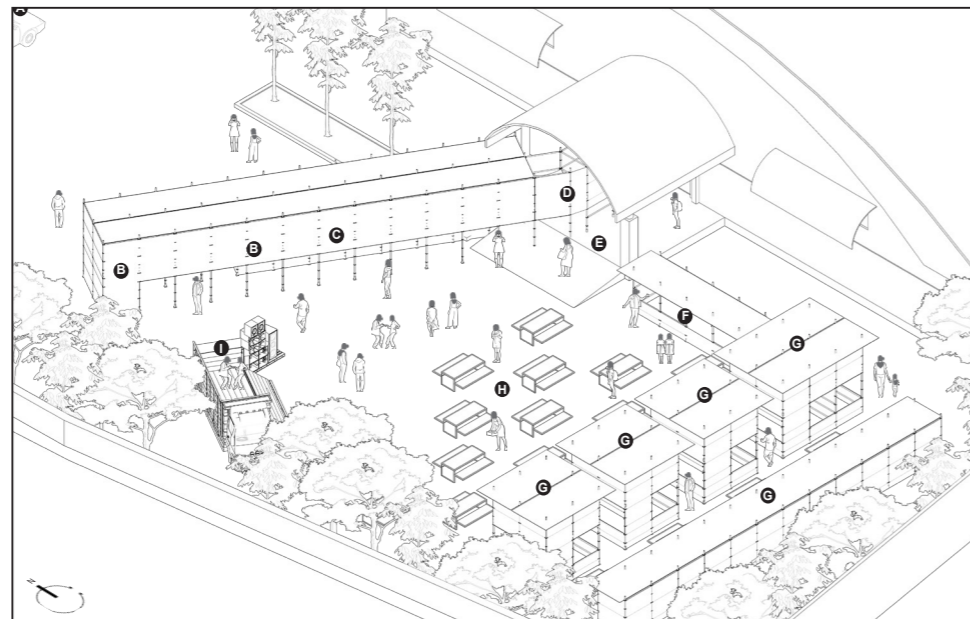


site plan



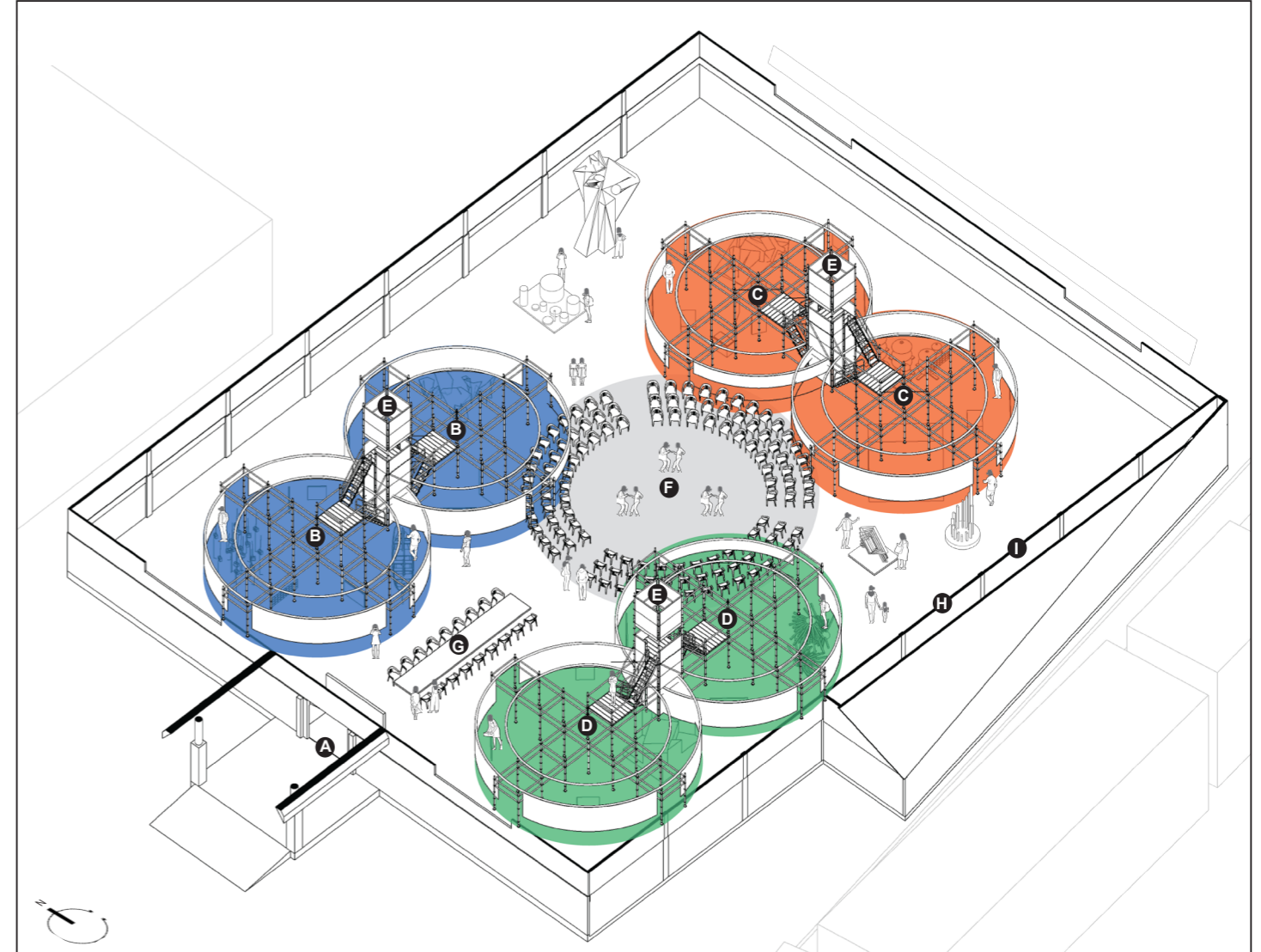
- legend :
- |                           |                                 |                        |
|---------------------------|---------------------------------|------------------------|
| <b>A</b> complex entrance | <b>D</b> parking space          | <b>G</b> outdoor venue |
| <b>B</b> complex exit     | <b>E</b> musola as solikin      | <b>H</b> indoor venue  |
| <b>C</b> venue entrance   | <b>F</b> multifunction building |                        |

outdoor area



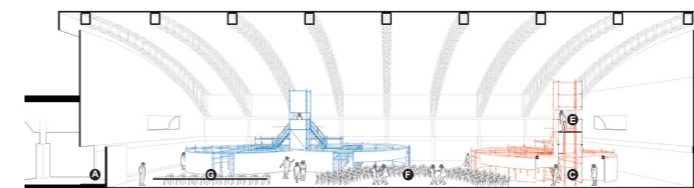
- legend :
- |                          |                            |                           |
|--------------------------|----------------------------|---------------------------|
| <b>A</b> parking space   | <b>D</b> entrance          | <b>G</b> fnb booth        |
| <b>B</b> ticketing booth | <b>E</b> exit              | <b>H</b> dining area      |
| <b>C</b> locker booth    | <b>F</b> merchandise booth | <b>I</b> performing stage |

exhibition area

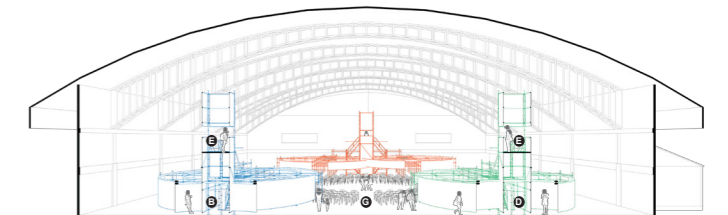


- legend :
- |                              |                               |                        |                      |
|------------------------------|-------------------------------|------------------------|----------------------|
| <b>A</b> entrance            | <b>C</b> urban compartment    | <b>E</b> viewing tower | <b>G</b> toilet      |
| <b>B</b> coastal compartment | <b>D</b> mountain compartment | <b>F</b> plaza         | <b>H</b> prayer room |

section 01



section 02





ATTACHMENT



Night sceneries of outdoor area equipped with temporary food stalls and performance stage



Main corridor leading to the exhibition entrance with ticketing booth on the left



Scenery of alternate performance 1



Scenery of alternate performance 2



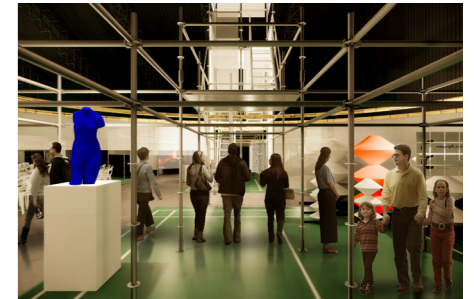
An accompanying dining table to host gala and discourse



View from the urban compartment towers toward the entire exhibition



View from the urban compartment 1



View from the urban compartment 2



View from the coastal compartment 1



View from the coastal compartment 2



View from the mountain compartment 1



View from the mountain compartment 2