

## PPMU MALE STUDENT PUBLIC TOILET

**Project Year** : 2022  
**Location** : Blitar, Indonesia  
**Project Type** : Built Project  
**Project Team** : Fikri Izza  
Satrio Seno  
Tedy Shahidan

**Short Desc.** : "Ponten" or fountain in this project means wudhu area and toilet.

Located in Pondok Pesantren Maftahul Uluum Blitar, this project aimed to renovate the existing building and giving a new face.

During design process, we tried to less in demolishing but also tried to make this building become a safety space for santriwan to wudhu. Besides, air circulation and nature lighting also getting more attention.

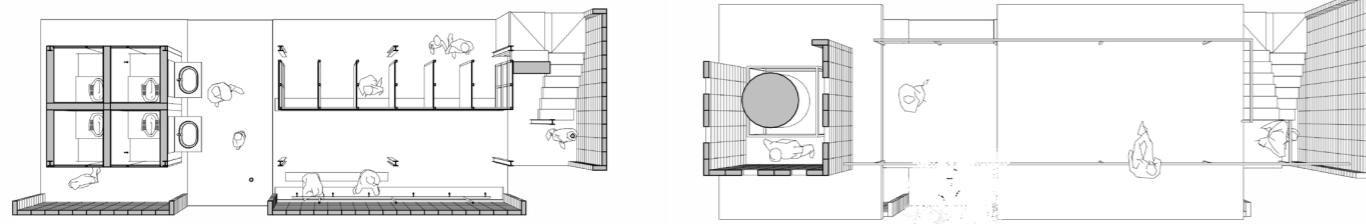
The wall between ponten with grape shelter using batako to give more safety.

**Tags** : *Education, Country-side, Toilet, Blitar, Bording School, Preservation*



## DESIGN OVERVIEW

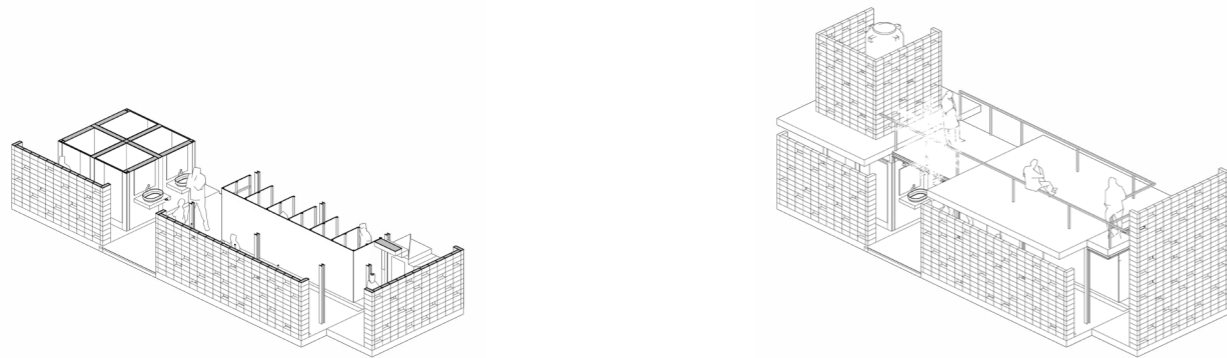
floorplan



legend

- : **A** wudhu      **D** toilet  
**B** washtafel      **E** storage  
**C** shower room      **F** roof tank

axonometry



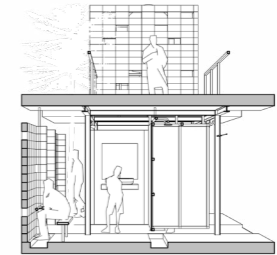
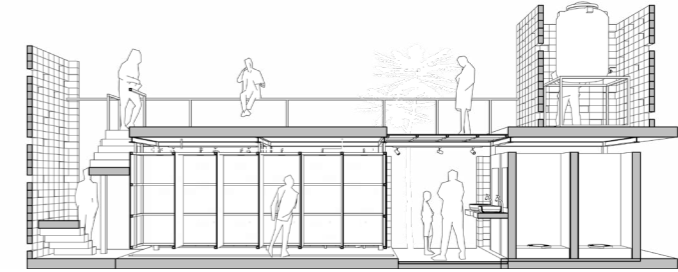
ground floor  
consists of semi public and private  
programs to accomodate santriwan do  
taharah (cleaning)

top floor  
can be accessed thru the ground floor,  
top floor is a laundry space for dry out the  
clothes and also a space for water tank.

section

water tank and lounge  
connected by steel  
construction with wire  
mesh on the top. it  
allows natural lighting  
to go through the  
toilet.

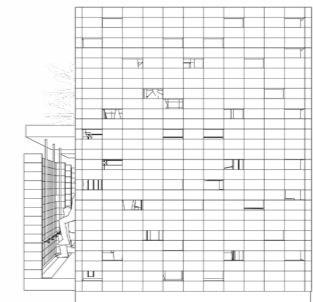
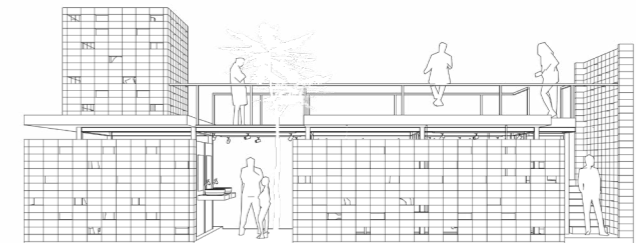
the different  
between semi  
public and private  
programs showed  
up by polycarbonate  
partition that applied  
to shower room.



elevation

top floor also can be  
accessed for a lounge  
room for santriwan.

the facade wall using  
batako to give more  
safety but also support  
the air to get inside  
the building.





ATTACHMENT



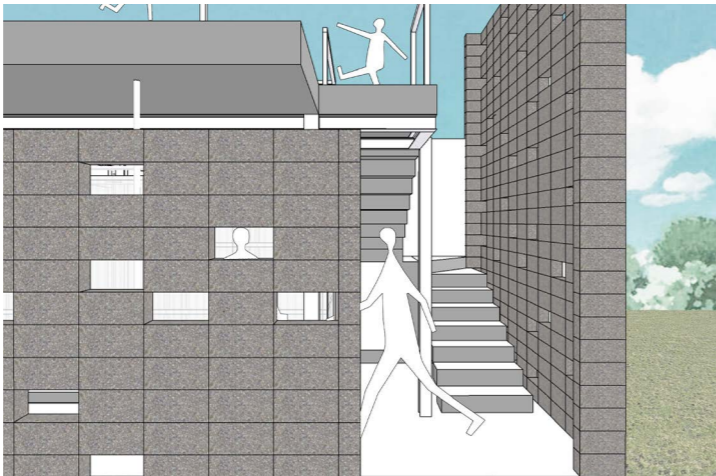
the connection between concrete and dry construction



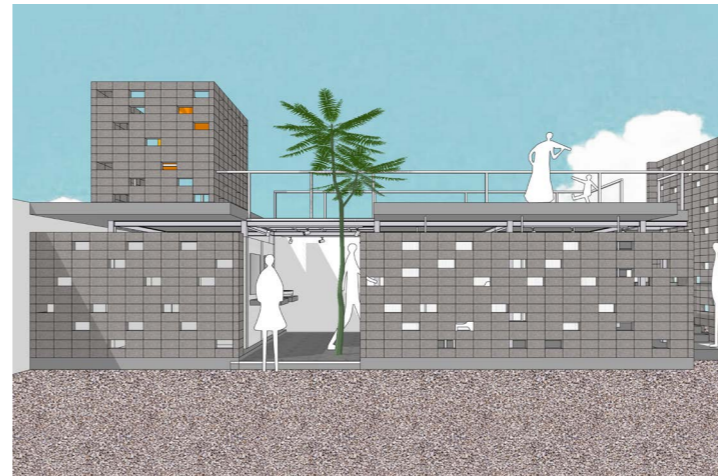
the connection between concrete and dry construction



main entrance of the building



the relation between context and the building on main entrance



front view of the building



ground floor and top floor connected by the stairs on the edge of the building